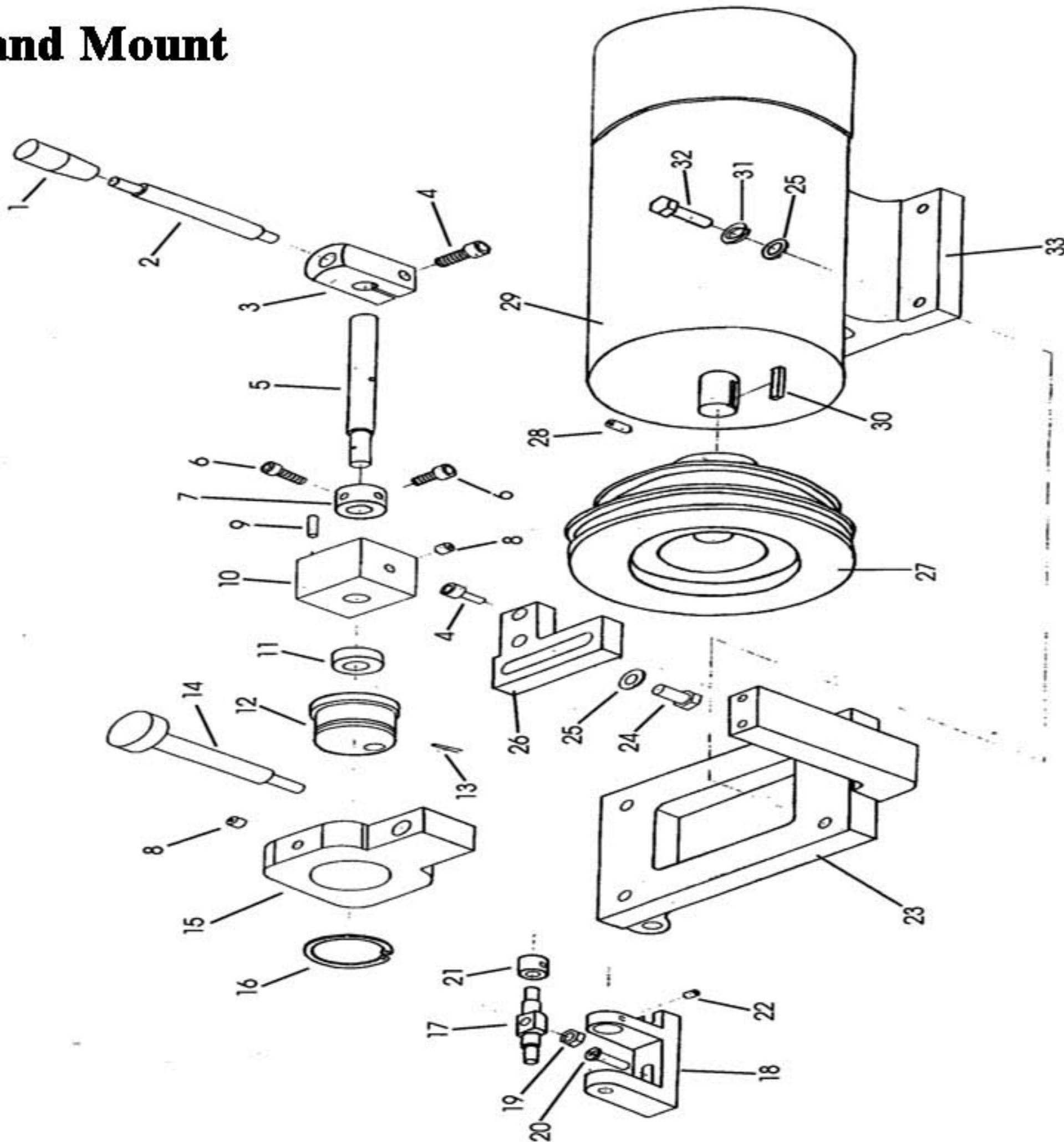


Motor and Mount



Motor & Mount

Diagram Number	Part Number	Reference Number	Description
1	G02001	JB/T7271.5	Handle sleeve BM 8 x 40
2	G02002	JB/T271.6	Handle BM 8 x 80
3	G02003	1-11	Handle Seat
4	G02004	S11971	Sockethead capscrew M6 x 16
5	G02005	1-10	Cam Shaft
6	G02006	S11671	Sockethead capscrew M5 x 16
7	G02007	1-09	Bushing (II)
8	G02008	C30050	Oiler #6
9	G02009	GB119	Pin 4 x 18
10	G02010	1-08	Block, Tensioner, center
11	G02011	1-07	Bushing (1)
12	G02012	1-05	Cam
13	G02013	GB117	Taper Pin 3 x 16
14	G02014	1-19	Adjusting Knob
15	G02015	1-06	Cam Seat
16	G02016	GB6170	Snap Ring 40
17	G02017	1-20	Shaft Pin

Diagram Number	Part Number	Reference Number	Description
18	G02018	1-17	Standoff Bracket
19	G02019	GB6170	Hex Nut M6
20	G02020	S11340	Sockethead Capscrew M6 x 20
21	G02021	1-18	Bushing
22	G02022	S1132	Conepoint Setscrew M4 x 6
23	G02023	1-03	Motor Mount
24	G02024	S12290	Hex Bolt M8 x 28
25	G02025	S18140	Washer M8
26	G02026	1-16	Mount end bracket
27	G02027	(G02027A) 1-04	Motor Pulley
28	G02028	(S11958) GB71	Setscrew M6 x 10
29	G02029	SS777	Motor
30	G02030	S18140	Washer M8
31	G02031	Key	
32	G02032	S12290	Hex Bolt M8 x 20
33	G02033		Motor Bracket

New DC	Motor
	G02029-110
	G02029-220

Granite Motor	Upgrade
	GMX02029-110
	GMX02029-220